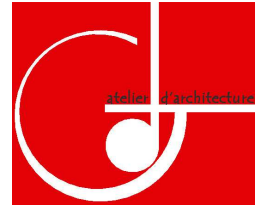


EXTENSION D'UNE MAISON DE VILLE  
PAREMENT BRIQUE EMAILLEE ET ENDUIT  
TRADITIONNELLE



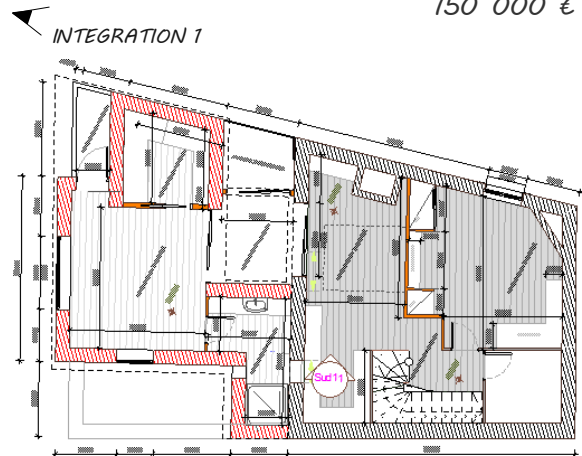
EN CONSTRUCTION  
MONTANT T.T.C.

Date : JUIN 2013  
150 000 €

C  
O  
M  
M  
U  
N  
E  
D  
E  
T  
O  
U  
R  
S



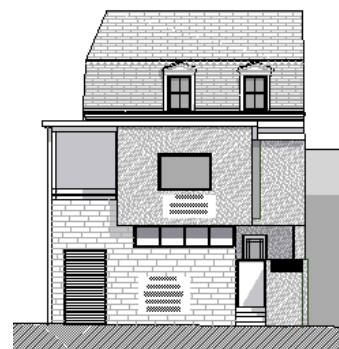
EXISTANT FACADE SUR RUE



INTEGRATION 1



FACADE NORD



FACADE EST